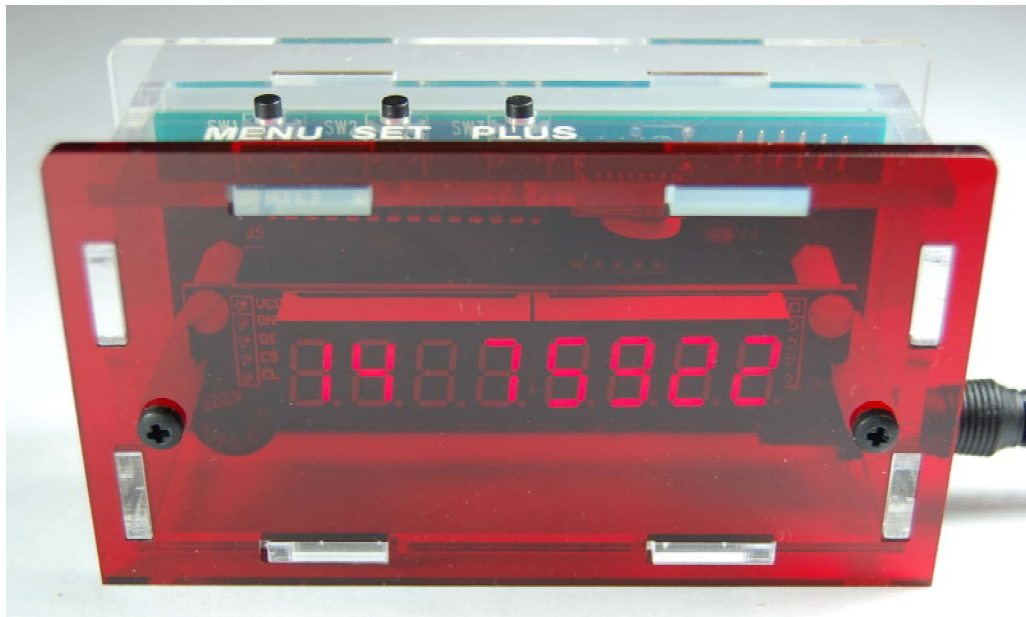




**MODEL CLK036**

**DIGITAL CLOCK**

**ASSEMBLY & OPERATION MANUAL**



**GEKCO Inc.**  
1565 SW Cypress Ln  
McMinville, OR 97128  
(503) 472-4770

P/N 595-324 REV 1.0

**Copyright © 2018**  
GEKCO Inc.  
All Rights Reserved  
Printed in the United States of America

This page is intentionally left blank

## TABLE OF CONTENTS

<b>1. INTRODUCTION.....</b>	<b>3</b>
<b>2. OPERATIONAL SUMMARY .....</b>	<b>3</b>
<b>3. PARTS AND UNPACKING .....</b>	<b>4</b>
3.1. TOP LEVEL PARTS LIST .....	4
3.2. DISPLAY BOARD PARTS LIST.....	5
3.3. MAIN BOARD PARTS LIST.....	5
3.4. FINAL ASSEMBLY HARDWARE PARTS LIST .....	7
3.5. ENCLOSURE PARTS LIST .....	8
<b>4. ASSEMBLY NOTES.....</b>	<b>9</b>
4.1. TOOLS .....	9
4.2. ASSEMBLY .....	9
4.3. SOLDERING .....	9
<b>5. STEP-BY-STEP ASSEMBLY .....</b>	<b>10</b>
5.1. MAIN CIRCUIT BOARD.....	10
<b>6. INITIAL TESTS.....</b>	<b>12</b>
<b>7. FINAL TESTS .....</b>	<b>13</b>
<b>8. IN CASE OF DIFFICULTY .....</b>	<b>13</b>
<b>9. FINAL PCA ASSEMBLY .....</b>	<b>13</b>
<b>10. FINAL ASSEMBLY.....</b>	<b>13</b>
<b>11. THEORY OF OPERATION .....</b>	<b>16</b>
11.1. BLOCK DIAGRAM.....	16
11.1. MAIN BOARD CIRCUIT DESCRIPTION .....	16
11.2. DISPLAY BOARD CIRCUIT DESCRIPTION .....	17
<b>12. FIRMWARE .....</b>	<b>18</b>
12.1. FLOW CHART .....	18
12.2. FIRMWARE DESIGN DESCRIPTION .....	19
<b>13. PCA PICTORIAL DIAGRAMS.....</b>	<b>19</b>
13.1. MAIN BOARD .....	19
13.2. DISPLAY BOARD .....	20
<b>14. SCHEMATIC MAIN BOARD.....</b>	<b>22</b>
<b>15. SCHEMATIC DISPLAY BOARD .....</b>	<b>23</b>
<b>16. DOCUMENT REVISION HISTORY.....</b>	<b>24</b>

**LIST OF FIGURES**

- FIGURE 1: MAIN BOARD COMPLETED ASSEMBLY ..... 10
- FIGURE 2 MAIN BOARD TOP VIEW 1 ..... 10
- FIGURE 3: MAIN BOARD TOP VIEW 2 ..... 10
- FIGURE 4: MAIN BOARD TOP VIEW 3 ..... 10
- FIGURE 5: MAIN BOARD TOP VIEW 4 ..... 11
- FIGURE 6: MAIN BOARD WITH STANDOFFS ..... 11
- FIGURE 7: MAIN AND DISPLAY BOARD INTERFACE CONNECTOR MOUNTING ..... 12
- FIGURE 8 RTC MODULE ASSEMBLY ..... 13
- FIGURE 9 ENCLOSURE BACK ..... 14
- FIGURE 10 ENCLOSURE BACK WITH TOP ..... 14
- FIGURE 11 DISPLAY BOARD TOP SIDE ..... 20
- FIGURE 12 DISPLAY BOARD BOTTOM SIDE..... 21

## **1. Introduction**

The Digital Clock Model CLK056 was designed to fill the need for an accurate digital clock with the capabilities of two time zone displays in a compact format.

This clock has 6 digits for hours, minutes and seconds and the hours display can alternate between two time zones, i.e. Coordinated Universal Time (UTC) and local time.

The CLK056 is offered in kit form or fully assembled and tested. The kit is very easy to assemble with no surface mount parts.

This step by step manual will guide you through the process to complete the assembly and testing of the model CLK056 Digital Clock. The manual was designed so a total beginner in electronics can be successful but the more experienced builder can skip any unnecessary information. Also this design is fully open source for both the hardware and firmware. There are full schematics and pictorial diagrams of the hardware, also there are links and flowcharts of the firmware microcontroller code.

## **2. Operational Summary**

The Model CLK036 has 8 digits of seven segment displays to display time zone one HOURS (UTC), time zone 2 HOURS (local), MINUTES and SECONDS.

- The eight digit display provides two time zones Hours, Hours, Minutes and Seconds
- The display LEDs are high contrast red, 0.36 inch character height
- Adjustable display brightness
- Local hours can be set for 12 or 24 hour mode
- Very accurate Real Time Clock (RTC) with battery backup
- Powered by a U.L. listed 5 VDC wall adapter
- Size: 4.16 x 2.35 x 1.46 inches (Width x Height x Depth)
- Weight: 0.30 pounds

# GEKCO DIGITAL CLOCK P/N CLK036 ASSEMBLY & OPERATION MANUAL

## 3. Parts and Unpacking

The kit is packaged in the order that the assembly is recommended. Each assembly block has it's associated parts bag. Only open a parts bag when called for during assembly to avoid misplacing parts.

### 3.1. Top Level Parts List

Remove the parts from the main bag and separate each individual parts bags.

<u>ITEM</u>	<u>QTY</u>	<u>PART NO.</u>	<u>DESCRIPTION</u>
1	1	DBR836-KIT	Clock Display Board PCA parts kit
2	1	CLK036M-KIT	Clock Main Board PCA parts kit
3	1	2217625	Real Time Clock (RTC) Module DS3231
4	1	CLK036HDW-KIT	Final Assembly Hardware
5	1	CLK036ENC-KIT	Enclosure Acrylic 6 Piece
6	1	54-660	AC to DC Power Supply Wall Adapter Single Output 5 Volt 1 Amp 5 Watt 2.1mm Conn

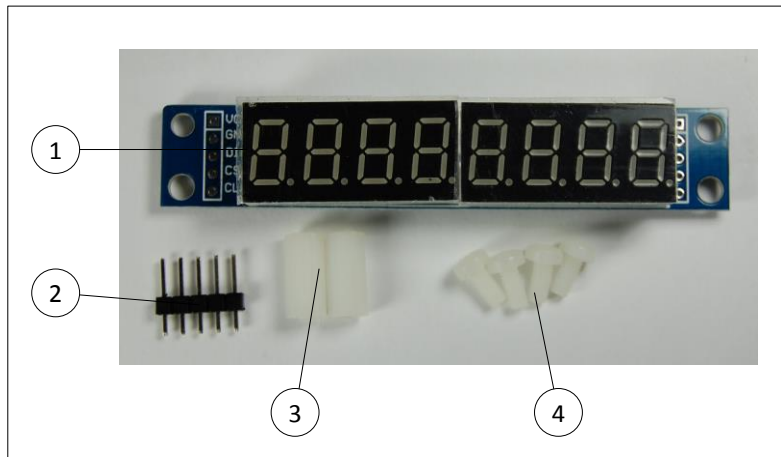


## **DIGITAL CLOCK MODEL CLK036**

### **3.2 Display Board Parts List**

Clock 036 Display Board PCA parts kit, DBR836-KIT

<u>ITEM</u>	<u>QTY</u>	<u>PART NO.</u>	<u>DESCRIPTION</u>
1	1	DBR836-PCA	LED Display Module Assembly 7-Segment 8 Digit 0.36"
2	1	131-1X05	Connector Header Male 1 row of 5 pins
3	2	255-25511	Hardware Standoff Nylon M3 x 12 mm
4	4	255-29341	Hardware Screw Nylon M3 x 0.50 mm Thread, 6mm White



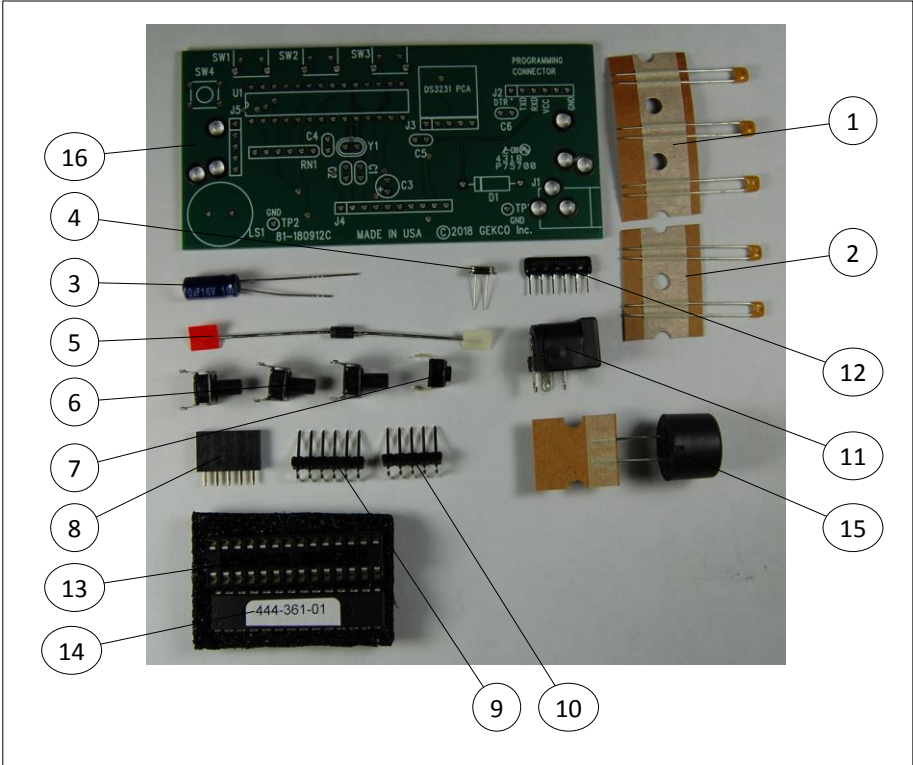
### **3.3 Main Board Parts List**

Clock 036 Main Board PCA parts kit, CLK036M-KIT

<u>ITEM</u>	<u>QTY</u>	<u>REFDES</u>	<u>PART NO.</u>	<u>DESCRIPTION</u>	<u>VALUE</u>
1	3	C4,C5,C6	20-104	Cap mono Cer 50v radial lead	0.1UF
2	2	C1,C2	21-220	Cap mono Cer COG radial lead	22pF 100v
3	1	C3	26-102	Cap elect alum radial lead	10uF/16v
4	1	Y1	404-160	Crystal HC49	16.00 MHz
5	1	D1	55-62	Diode schottky rectifier	1N5817-T
6	3	SW1,SW2,S W3	64-1839	Switch Momentary SPST	
7	1	SW4	64-1827	Switch Momentary 5mm H	
8	1	J5	131-1X05S	Connector Header Female	1 row of 5 pins
9	1	J2	131-1X06RA	Connector Header Right Angle	Male 1 row of 6 pins
10	1	J3	131-1X05RA	Connector Header Right Angle	Male 1 row of 5 pins
11	1	J1	134-002	Connector Power 2.1mm PCB Mount	
12	1	RN1	95-103	Res network 6 sip	10K 5 Res SIP Package
13	1	X1	434-311	Socket IC	Dip28-300
14	1	U1	444-361-01	IC Microcontroller	Programmed Part CLK036 V1.01

# GEKCO DIGITAL CLOCK P/N CLK036 ASSEMBLY & OPERATION MANUAL

15	1	LS1	220-1420	Audio Piezo Transducer 30V	
16	1		81-180912C	Printed Circuit Board	Main Board



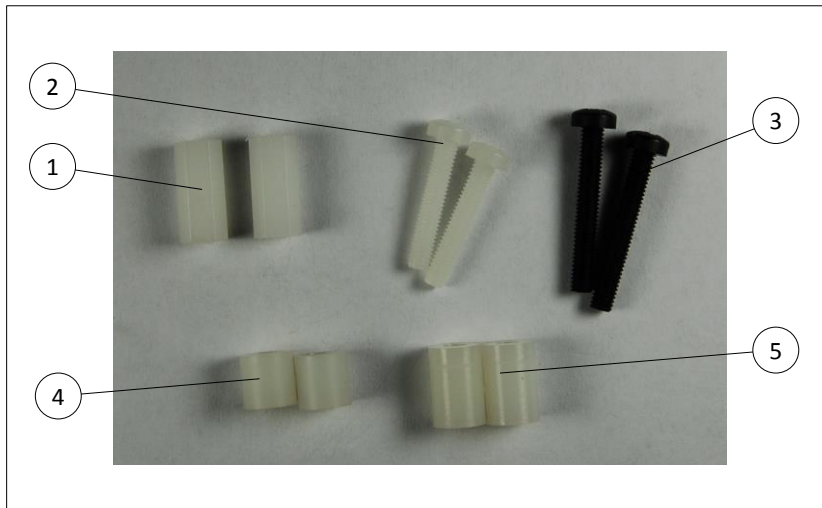


## DIGITAL CLOCK MODEL CLK036

### 3.4. Final Assembly Hardware Parts List

Clock 036 Final Assembly Hardware parts kit, P/N CLK036HDW-KIT

<u>ITEM</u>	<u>QTY</u>	<u>PART NO.</u>	<u>DESCRIPTION</u>
1	2	255-25511	Hardware Standoff Nylon M3 x 12 mm
2	2	255-29346	Hardware Screw Nylon M3 x 0.50 mm Thread, 16mm White
3	2	255-29347	Hardware Screw Nylon M3 x 0.50 mm Thread, 20mm Black
4	2	255-876	Hardware Spacer Round 0.25" Hole Size #4
5	2	255-877	Hardware Spacer Round 0.375" Hole Size #4



# GEKCO DIGITAL CLOCK P/N CLK036 ASSEMBLY & OPERATION MANUAL

## 3.5. Enclosure Parts List

Clock 036 Enclosure kit, P/N CLK036ENC-KIT

<u>ITEM</u>	<u>QTY</u>	<u>PART NO.</u>	<u>DESCRIPTION</u>
1	1	86-18111901	Front Panel Acrylic 3mm Transparent Red
2	1	86-18111902	Back Panel Acrylic 3mm Clear
3	1	86-18111903	Top Panel Acrylic 3mm Clear
4	1	86-18111904	Bottom Panel Acrylic 3mm Clear
5	1	86-18111905	Left Side Panel Acrylic 3mm Clear
6	1	86-18111906	Right Side Panel Acrylic 3mm Clear



# DIGITAL CLOCK MODEL CLK036

## 4. Assembly Notes

### 4.1. TOOLS

You will need these tools to assemble your kit.

- Diagonal Cutters
- Needle Nose Pliers
- Flat Head Screwdriver
- Philips Screwdriver (for the enclosure only)
- Pencil Soldering Iron (22 to 25 WATTS)

### 4.2. ASSEMBLY

1. Follow the instructions carefully. Read the entire step before you perform each operation.
2. Refer to the Pictorial and Detail Illustrations for help in performing the assembly steps. The illustrations are arranged in the proper sequence, as called for in the assembly steps.
3. Pictorials show the overall operation for a group of assembly steps: Details generally illustrate a single step. When you are directed to refer to a certain Pictorial "for the following steps," continue using that Pictorial until you are referred to another Pictorial for another group of steps.
4. Position all parts as shown in the Pictorials.
5. Solder instructions are generally given only at the end of a series of similar steps. You may solder more often if you desire.
6. Each circuit part in an electronic kit has its own reference designator (R3, C8, etc.). Use these designators when you want to identify the same part in the various sections of the manual.
7. **SAFETY WARNING: Avoid eye injury when you cut off excessive lead lengths. Wear safety glasses or goggles and hold the leads so they cannot fly toward your eyes.**

### 4.3. SOLDERING

Soldering is one of the most important operations you will perform while assembling your kit. A good solder connection will form an electrical connection between two parts such as a component lead and a circuit board foil. A bad solder connection could prevent an otherwise well-assembled kit from operating properly.

It is easy to make a good solder connection if you follow a few simple rules:

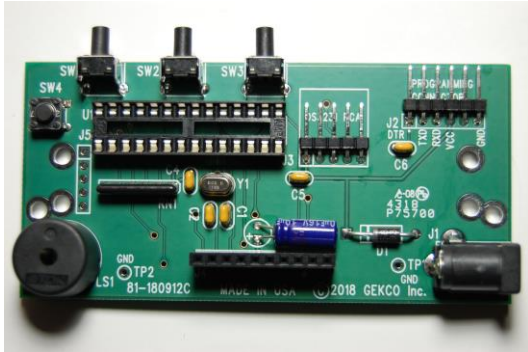
Use the right type of soldering iron. A 22 to 25-watt pencil soldering iron with a 1/8" or 3/16" chisel or pyramid tip works best.

Keep the soldering iron tip clean. Wipe it often on a wet sponge or cloth: then apply solder to the tip to give the entire tip a wet look. This process is called tinning, and it will protect the tip and enable you to make good connections. When solder tends to "ball" or does not stick to the tip, the tip needs to be cleaned and re-tinned.

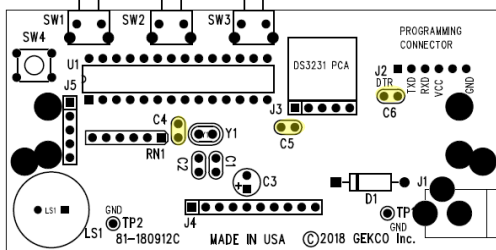
NOTE: What solder to use, leaded or lead free? The printed circuit boards in this kit are plated with lead free solder so if you choose to use lead free solder the complete assembly will be RoHS compliant. Regarding kits though, it is more difficult to solder with lead free material due to the higher melting temperature, so we recommend using a rosin core, radio-type solder (60/40) or (63/37) tin-lead content for all of the soldering in this kit. If you decide to use leaded solder, be careful to wash your hands after soldering and never eat, drink or smoke, until you wash thoroughly and you are done soldering. Contain all materials that touched leaded solder in a special container dedicated for that purpose. This waste can be disposed of at electronic-recycling events or contact your waste management company

## 5. Step-By-Step Assembly

### 5.1. Main Circuit Board



• Figure 1: Main Board Completed Assembly

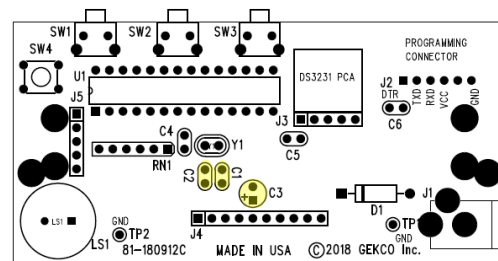


• Figure 2 Main Board Top View 1

( ) C4: 0.1 uF (104) radial-lead ceramic capacitor

( ) C5: 0.1 uF (104) radial-lead ceramic capacitor

( ) C6: 0.1 uF (104) radial-lead ceramic capacitor

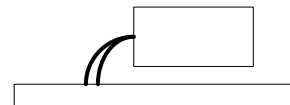


• Figure 3: Main Board Top View 2

( ) C1: 22 pF (22) radial-lead ceramic capacitor

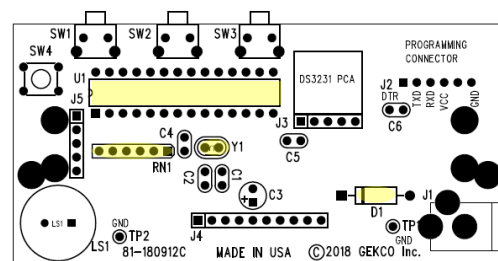
( ) C2: 22 pF (22) radial-lead ceramic capacitor

In the next step be sure to observe the correct polarity as noted before and lay the capacitor down against the board.



C3 SIDE VIEW

( ) C3: 10 uF radial-lead electrolytic aluminum capacitor



• Figure 4: Main Board Top View 3

( ) Y1: Crystal HC49 16 MHz

For the next step, be careful to position the end with the dot or line towards the “square pad” and tapered outline on the circuit board. After you solder the first pin make sure the pins are

## DIGITAL CLOCK MODEL CLK036

fully seated in their holes, solder the rest of the pins to the foil.

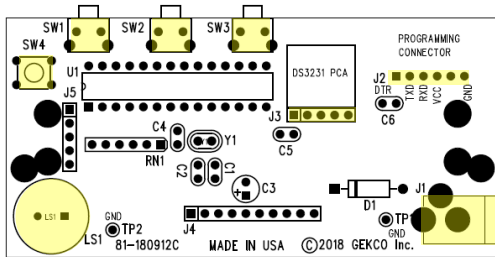
- ( ) RN1: 10 kΩ 103 resistor pack.

NOTE: When you install the diode, be sure to orient the diode correctly. Always match the band on the diode with the band mark on the circuit board. The circuit will not work properly if a diode is installed backwards.

- ( ) D1: 1N5817 schottky diode

When installing the IC socket next, be sure to align the notch on the socket with the notch on the PCB silkscreen.

- ( ) X1: 28 pin DIP socket



• Figure 5: Main Board Top View 4

- ( ) SW1: momentary right angle switch
- ( ) SW2: momentary right angle switch
- ( ) SW3: momentary right angle switch
- ( ) SW4: momentary switch
- ( ) J2: Connector Header Male 6 pin right angle mount
- ( ) J3: Connector Header Male 5 pin right angle mount

In the next step, solder one pin and re-align the connector if necessary and then solder the rest of the pins. The connector needs to be aligned with the silkscreen outline.

- ( ) J1: Connector Power 2.1 mm
- ( ) LS1: Audio Piezo Speaker

( ) Solder the leads to the foil and cut off the excess lead lengths.

The next step is to install the mating connectors between the display board (J1) and the main board (J5).

Open the display board parts kit and get the following parts:

- Quantity 2 of:  
M3 x 12 mm nylon standoffs

- Quantity 4 of:  
M3 x 6 mm nylon screws

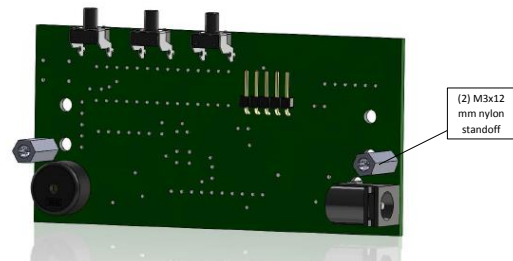
The display board

The display board connector  
J1: Connector header male 5 pin

The main board connector  
J5: Connector Header Female 5 pin

Refer to figure 10 and 11 for the next steps

Mount two M3 x 12 mm nylon standoffs with two M3 x 6 mm nylon screws on the main board as shown.



• Figure 6: Main board with standoffs

Insert the 5 pin female connector into the main board at J5.

Identify the long pins on the display board 5 pin male connector J1 and insert into or mate with J5 the 5 pin female connector.

Place the display board onto the two M3 x 12 mm nylon standoffs, with the 5 pin male connector J5 inserted into J1 on the display board and insert two M3 x 6 mm nylon screws as shown.

# GEKCO DIGITAL CLOCK P/N CLK036 ASSEMBLY & OPERATION MANUAL



- Figure 7: Main and Display board Interface connector mounting

Solder the pins of the display board connector J1 on the display board and then do the same for the connector pins on the main board J5.

J1 is not installed in this version of the kit.

This completes the assembly of the Main board.

## CIRCUIT BOARD CHECKOUT

Carefully inspect the circuit boards for the following problems.

- ( ) Unsoldered connections
- ( ) Poor solder connections
- ( ) Solder bridges between foil patterns
- ( ) Protruding leads which could touch together

Refer to the illustration where the parts were installed as you make the following visual checks.

- ( ) Diodes for the proper type and positioning of the banded end
- ( ) Electrolytic capacitors for the correct position of the positive ( + ) or a negative ( - ) marked ends

## 6. Initial Tests

Before installing the IC's perform the following tests.

Using a multi-meter to measure resistance perform the following checks.

### Main Board

( ) Verify that the resistance with the positive lead on D1 cathode ( the component end with the band) and negative lead on the ground pad TP1, is greater than 2k ohms.

### IC INSTALLATION.

NOTE: You will install the following IC's on the main circuit board.

CAUTION: Integrated circuits (IC's) are complex electrical devices that perform many complicated operations in a circuit. These devices can be damaged during installation. Read all of the following information before you install the IC's.

Some of the IC's you will install in the following steps are MOS {metal oxide semiconductor} devices. Be sure they do not get damaged by static electricity. Once you remove the IC from the foam pad, **do not let go of it** or lay it down until it is in its socket. Install it as follows. Read all of the following steps before you pick up an IC.

1. Pick up the IC and touch the foam pad with both hands.
2. Hold the foam pad with one hand and remove the IC with the other hand.
3. Continue to hold the IC with the one hand and straighten any bent pins with the other hand.
4. The pins on the IC's may be bent out at an angle, and if this is the case, they will not line up with the holes in the IC socket or circuit board pads. Lay the IC down on its side as and very carefully roll it toward the pins to bend the lower pins into line. Then turn the IC over and bend the pins on the other side in the same manner. Do not try to install an IC without first bending the pins as described. To do so may damage the IC pins or the socket, causing an intermittent contact.

Install the IC on the display circuit board. Be sure to line up the dimple with the circuit board silkscreen

## DIGITAL CLOCK MODEL CLK036

Install the IC on the main circuit board:

( ) U1: ATMEGA328P IC

This completes the assembly.

### 7. Final Tests

Using a multi-meter to measure resistance perform the following checks.

( ) Verify that the resistance with the positive lead on U5 pin 20 and negative lead on pin 10, is greater than 2k ohms.

( ) Connect the plug in transformer T1 to power connector PS1 and plug into a wall outlet and verify that the voltage with the positive lead on U5 pin 20 and negative lead on pin 10, is 5V.

### 8. In Case Of Difficulty

The “Visual Checks” that are provided below will help you locate any difficulties that might occur during the assembly and testing of your Digital Clock. Additional “ In Case of Difficulty” information is also provided in your Operation Manual.

In an extreme case where you are unable to resolve a difficulty, refer to the “Customer Service” information at the back of the Manual.

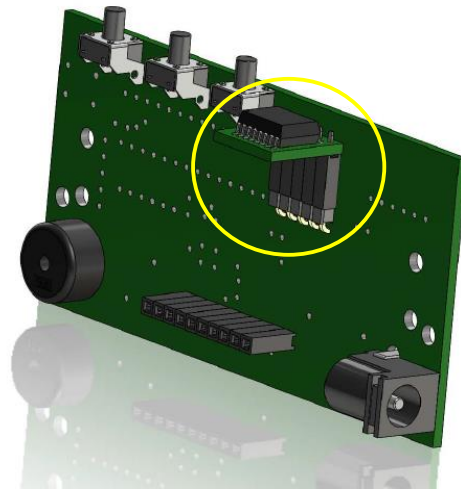
#### VISUAL CHECKS

1. The majority of kits that fail are due to poor solder connections. Therefore, you can eliminate many difficulties by carefully inspecting each connection to make sure it is soldered as described in the solder instructions section. Reheat any doubtful connections.
2. Check the circuit board to be sure there are no solder bridges between adjacent connections.

3. Check capacitor values carefully. Be sure the proper value part is installed at each capacitor location and that the negative ( - ) mark or a positive ( + ) mark is oriented correctly.
4. Check each resistor value carefully.
5. Be sure the correct diode is installed at each location, and that the banded end is positioned correctly.
6. Check the orientation and the correct part number of the Integrated Circuits. Use the pictorial diagrams as a reference.

### 9. Final PCA Assembly

( ) Locate the RTC module and install on the clock main board as shown.



• Figure 8 RTC Module Assembly

### 10. Final Assembly

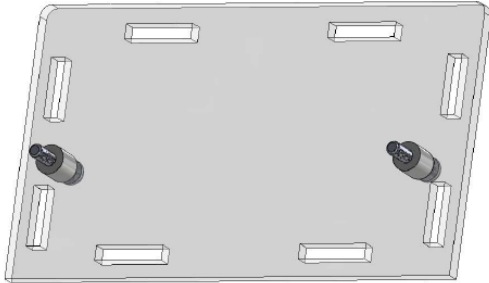
Skip these steps if the enclosure is not used.

( ) Unpack the 6 piece enclosure which includes a transparent red front piece, and clear back, top, bottom and side panels.

( ) Remove the paper backing on all the enclosure pieces.

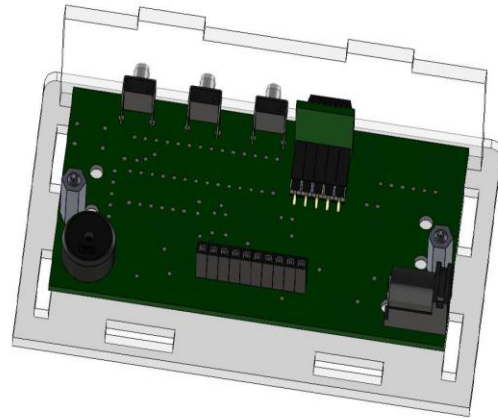
# GEKCO DIGITAL CLOCK P/N CLK036 ASSEMBLY & OPERATION MANUAL

( ) Locate the clear back panel and insert two white screws into their respective mounting holes and add two 1/4" spacers. Lay this assembly down on the work space with the screw threads facing up.

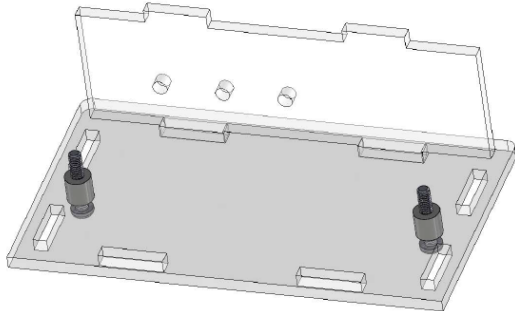


• Figure 9 Enclosure Back

( ) Insert the two M3 x 12mm hex standoffs and secure to the two rear screws.

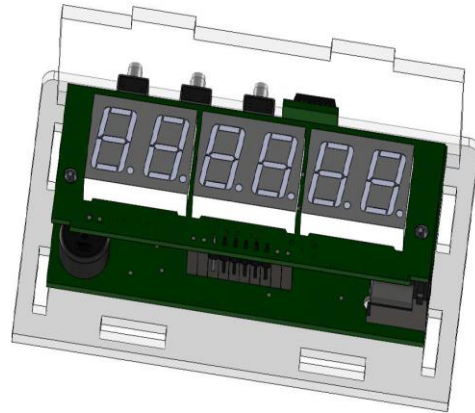


( ) Insert the top panel of the enclosure onto the main board assembly. Make sure the switches properly align with the top piece of the enclosure.

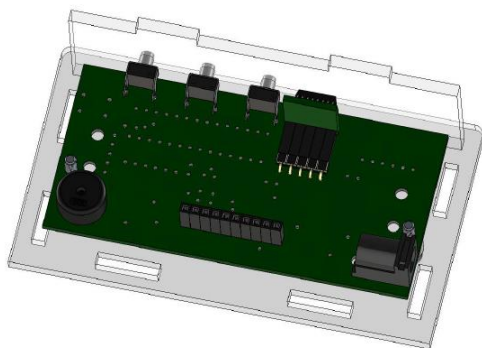


• Figure 10 Enclosure Back with Top

( ) Mate the display board to the main board and make sure the connector is mated properly.



( ) Add the main board assembly with the top panel on to the screws and spacers.



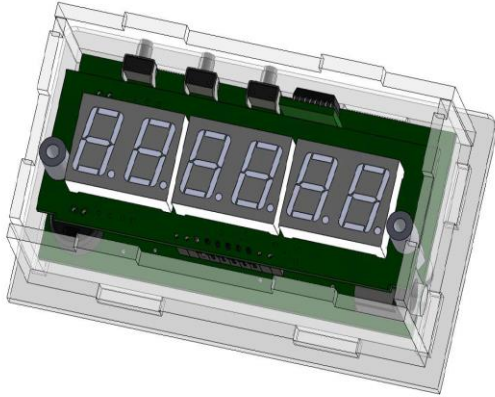
( ) Add the left panel.

( ) Add the right panel and make sure the hole is aligned with the power connect J1.

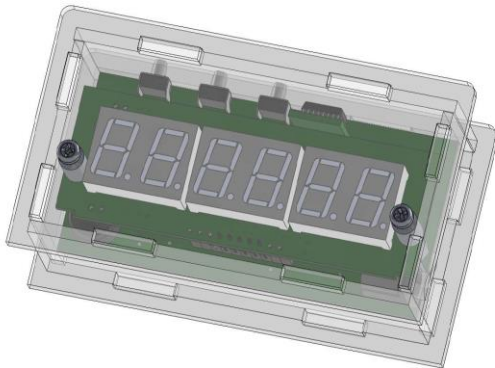
( ) Add the bottom panel.



## **DIGITAL CLOCK MODEL CLK036**



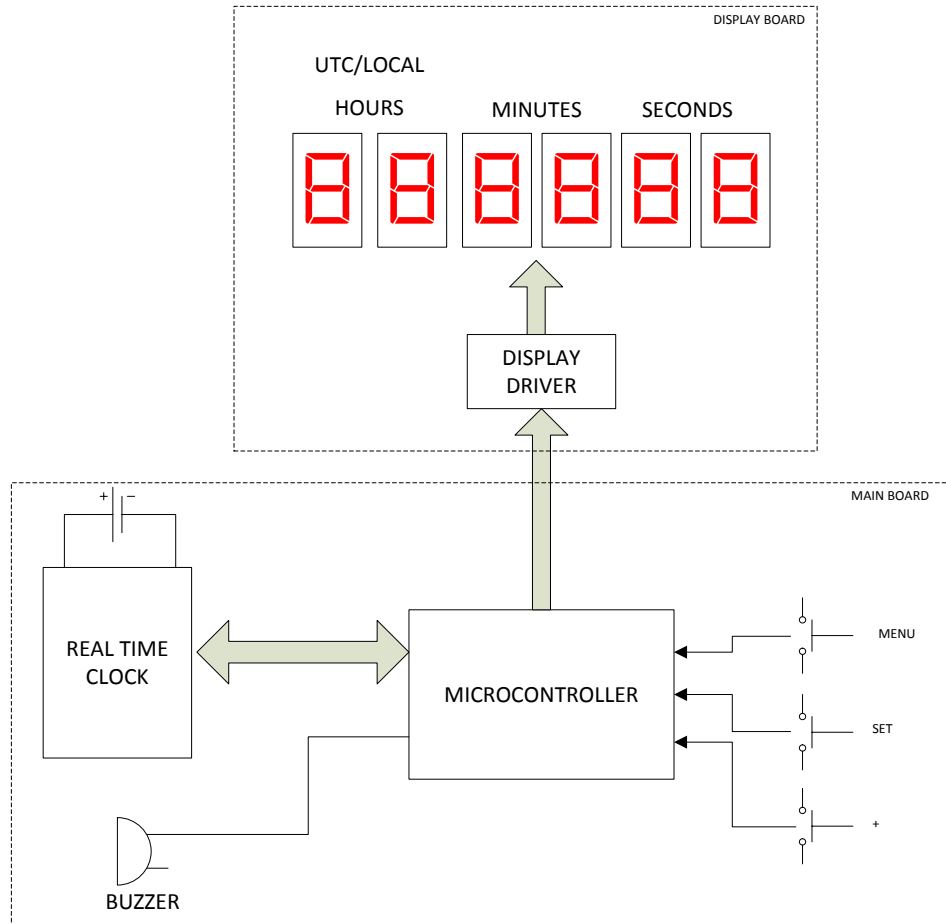
- ( ) Install two spacers over the mounting holes
- ( ) Add the front panel and make sure all pieces are aligned properly.
- ( ) Add two black screws and loosely tighten to secure the enclosure.



Congratulations you have successfully completed the assembly of the unit and now you can enjoy using a clock that you have assembled yourself.

## 11. Theory of Operation

### 11.1. Block Diagram



The clock consists of two modules, the main board and the display board. The clock was designed this way to allow the same main board to use different display boards which could vary in size.

It may be helpful to review the block diagram and schematics while reading the circuit descriptions.

#### 11.1. Main Board Circuit Description

The main circuit board has the microcontroller, real time clock (RTC), switch inputs and connectors for the display board, programming interface and the input power.

The microcontroller U3 is the heart of the clock. This design uses the popular Atmel ATMEGA328P. This is a very powerful microcontroller with 32Kbytes of flash memory, and 2Kbytes of SRAM as well as numerous other peripherals. See the ATMEGA328P data sheet for details.

## **DIGITAL CLOCK MODEL CLK036**

The crystal Y1 provides the clock for the microcontroller and C1 and C2 are required pad capacitors for the crystal to operate. The display board interface connectors are J4 and J5. J5 is the only one used in the model CLK036. This connector provides the standard serial peripheral interface (SPI) interface to the display board. The signal SS is asserted low when serial data is present on the MISO signal. The MISO signal is the serial data stream from the microcontroller to the MAX7219 on the display board. The signal SCK provides the clock timing for the interface. More details of the SPI interface can be found on the web.

Connector J3 provides the interface to the real time clock (RTC) module. The clock time accuracy and the time keeping function are provided by the RTC module, which has a Maxim DS3231 real time clock. This device uses a 3 wire, I2C interface to communicate with the microcontroller.

Connector J2 is the programming interface connector. This allows the firmware to be modified and the ability to reprogram the microcontroller. The CLK036 main board looks just like a Arduino Uno and can use the popular Arduino IDE.

The path for the input power for the clock is provided by connector J1. The input voltage should be 5V +/- 5%. Diode D1 is a schottky diode which provides protection of the internal circuits if the polarity of the applied voltage is incorrect.

Resistor network RN1 provides the 10kohm pull up resistors for the switch inputs SW1 through SW4. SW1, SW2 and SW3 provide the clock setup capabilities and SW4 allows the user to reset the device.

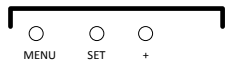
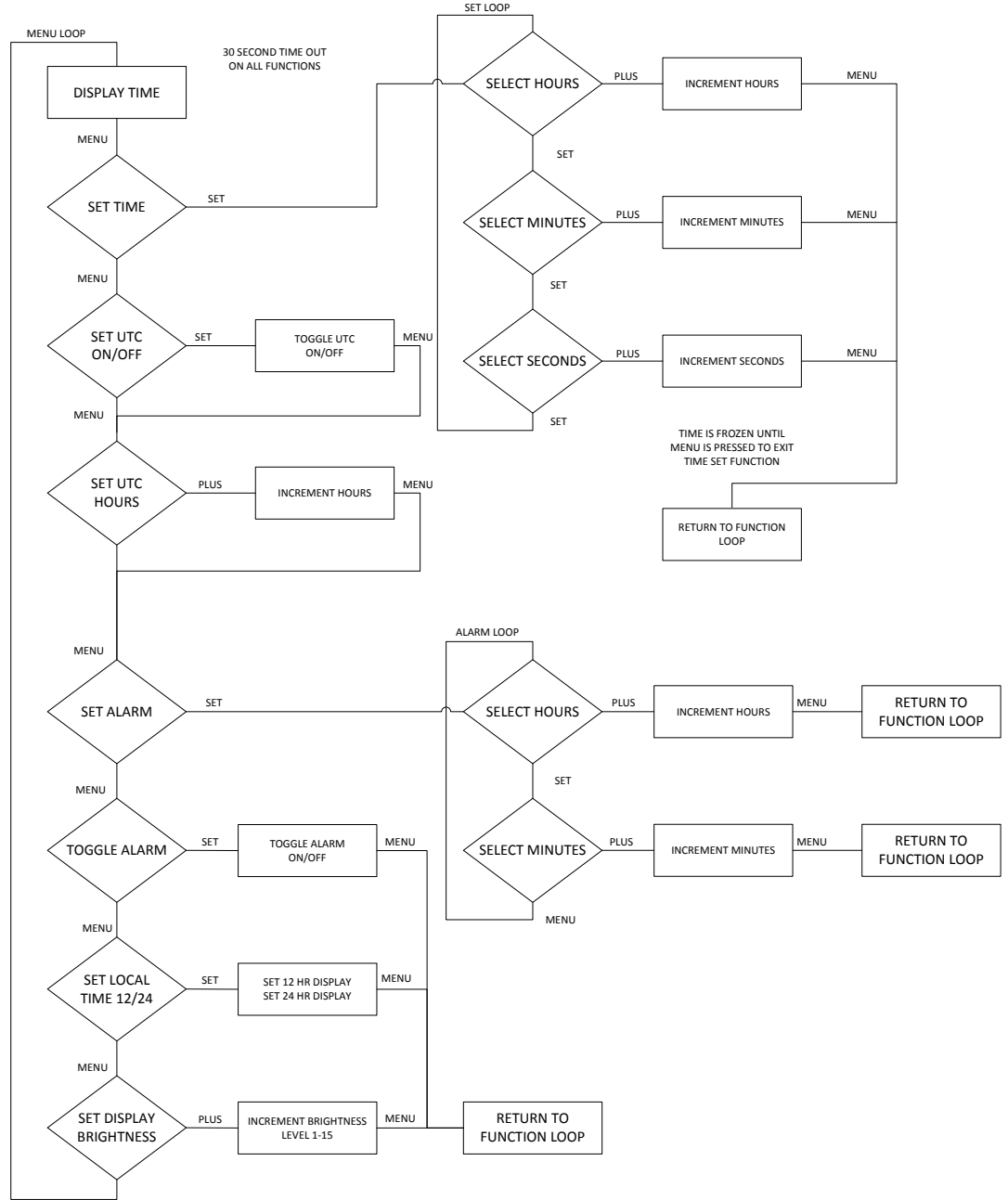
The piezo electric buzzer LS1 provides an audible alert for the alarm function.

### **11.2. Display Board Circuit Description**

The display board used in the model CLK036 utilizes the MAX7219 as the display driver and controller. This part provides a 4 wire interface to the main board to interface to the 8 digit display. The LED displays are multiplexed by the logic in the MAX7219. The microcontroller on the main board only needs to communicate with the display board when a change in the display is desired.

12. Firmware

12.1. Flow Chart

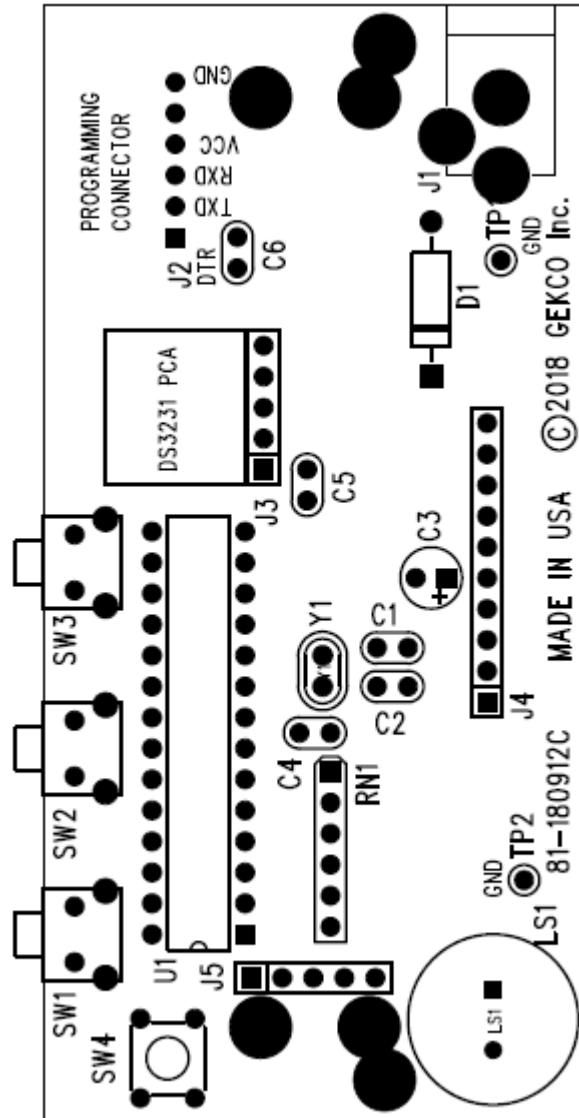


# DIGITAL CLOCK MODEL CLK036

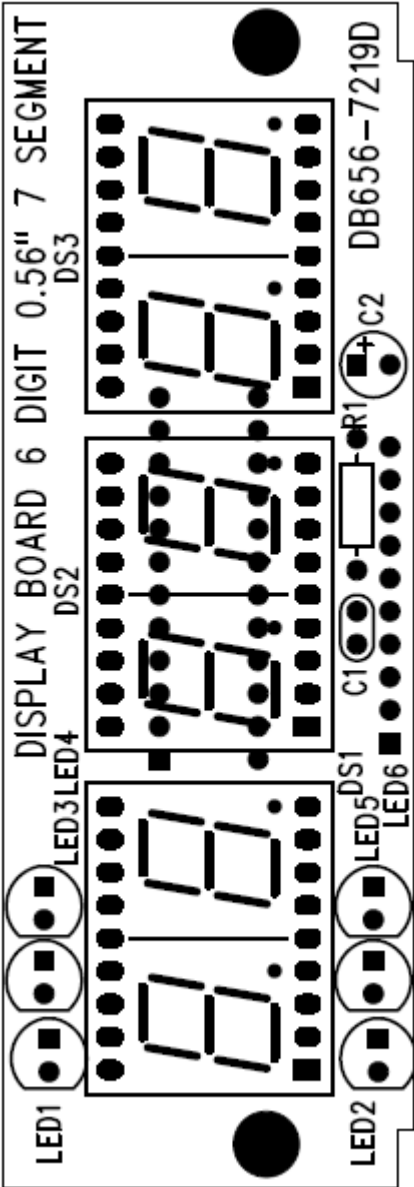
## 12.2. Firmware Design Description

## 13. PCA Pictorial Diagrams

### 13.1. Main Board

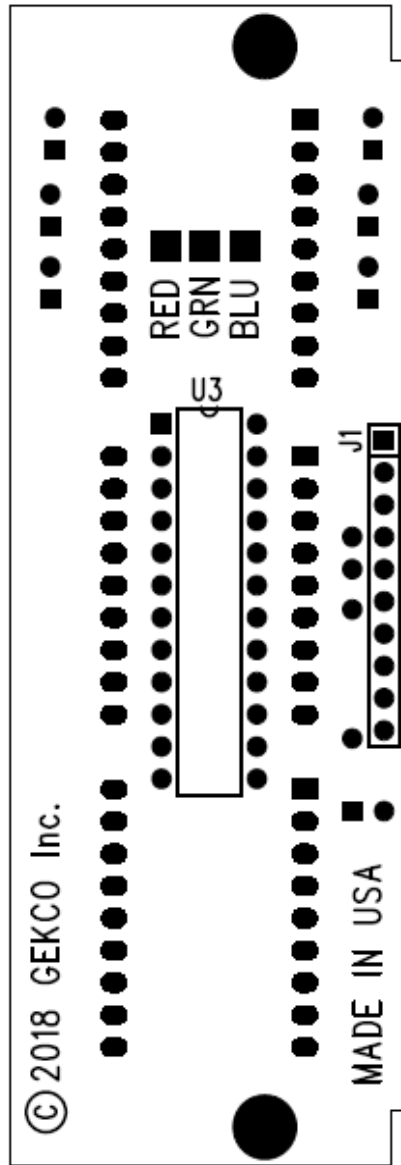


13.2 Display Board



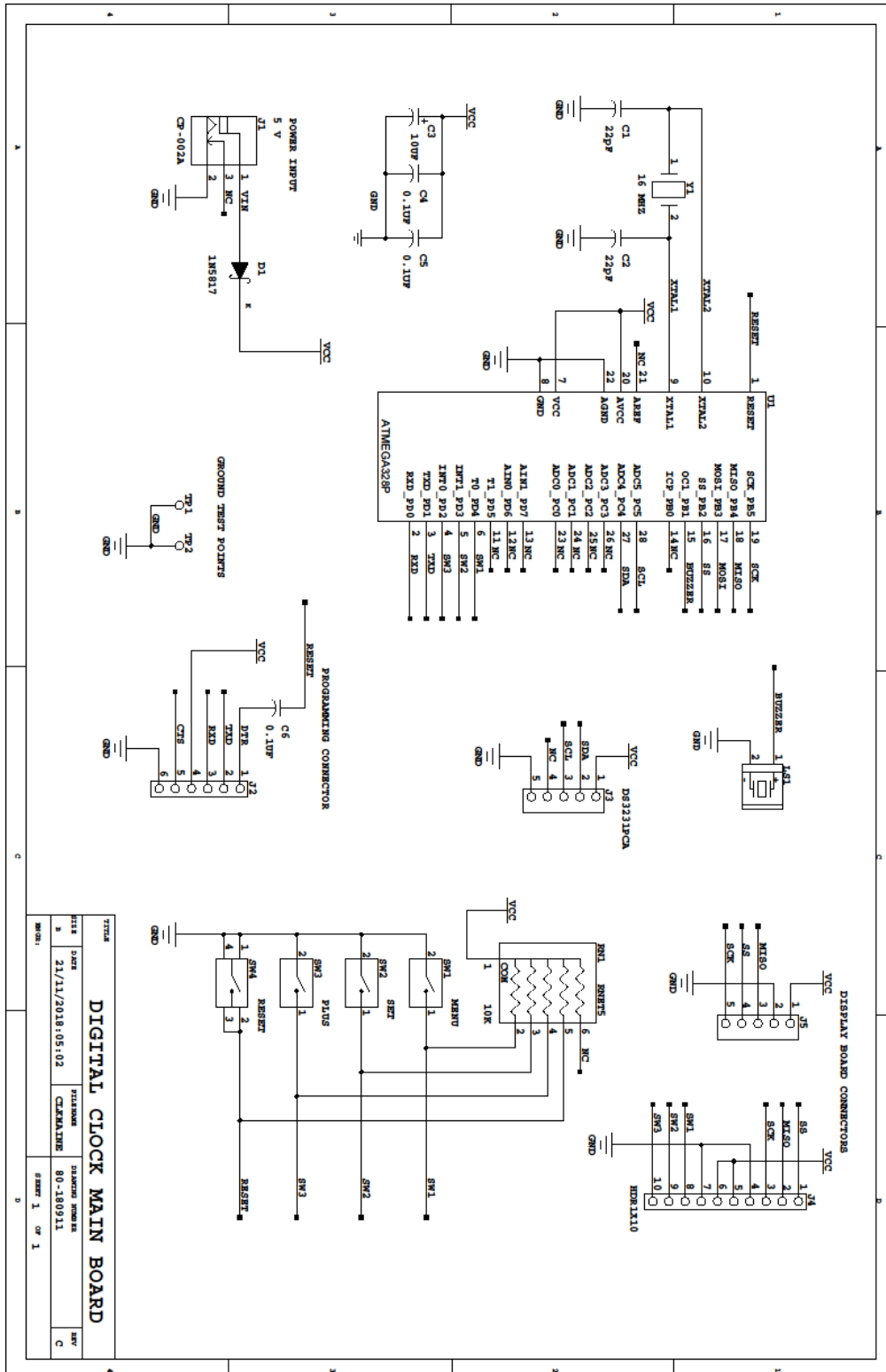
•Figure 11 Display Board Top Side

**DIGITAL CLOCK MODEL CLK036**



•Figure 12 Display Board Bottom Side

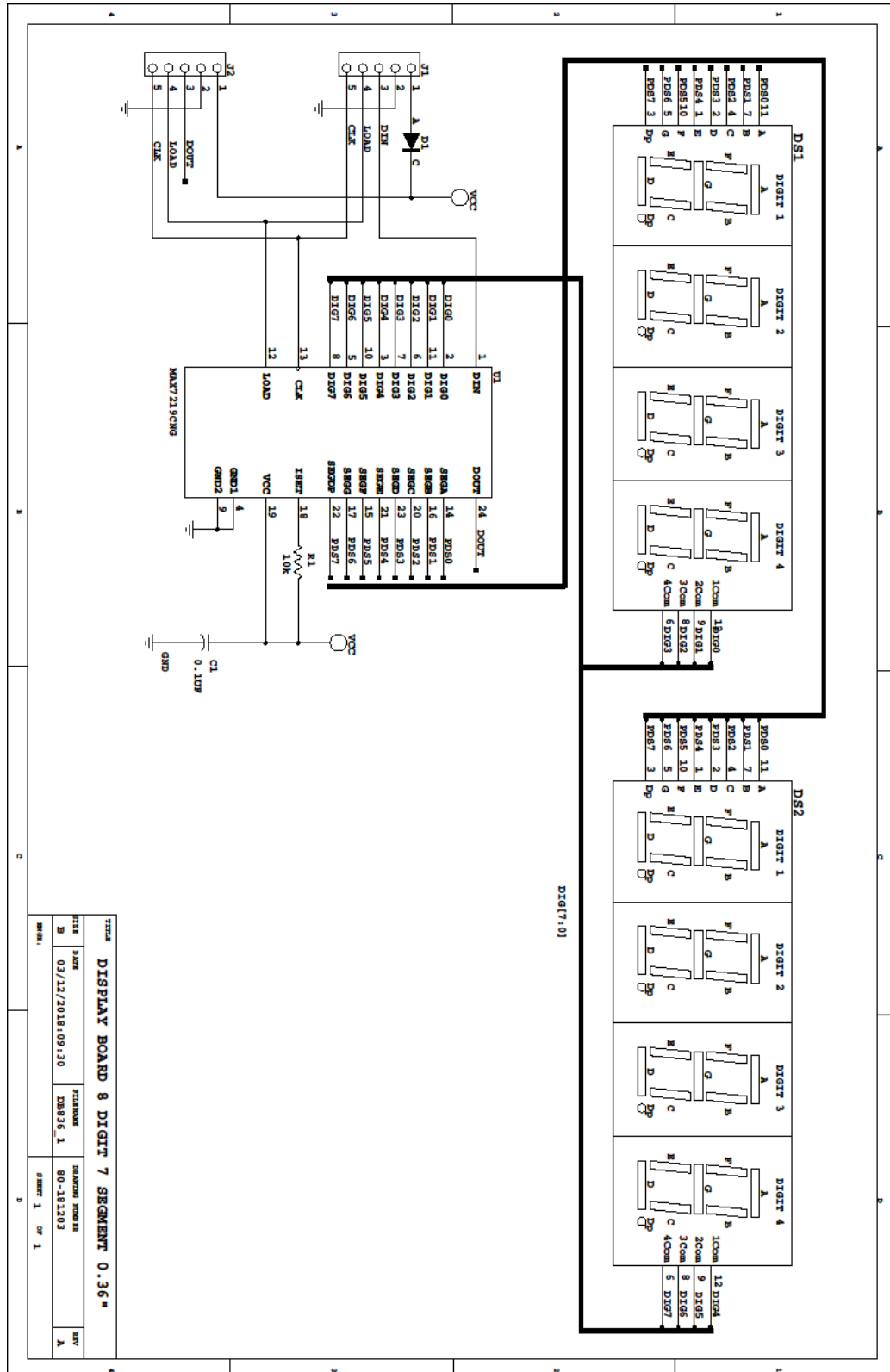
14. Schematic Main Board





# DIGITAL CLOCK MODEL CLK036

## 15. Schematic Display Board



**16. Document Revision History**

1.0	3-Dec-18	Initial Release
-----	----------	-----------------